

PORTER

The Trusted Name In Nitrous



Nitrous Oxide And Oxygen Systems For Use In The ED And Pediatric Hospitals

Proven Safe And Effective For Medical Procedures

Analgesic

Anxiolytic

Minimal Sedation



www.PorterInstrument.com/Medical

Porter Is The Leading Manufacturer Of Nitrous Oxide And Oxygen Systems

Porter Instrument is the leading manufacturer of nitrous oxide systems for medical and dental applications. When precision delivery, reliability, ease of use, and safety are important – Porter is the clear choice. Nitrous oxide and oxygen administration is safe and has many benefits for medical facilities – including procedure efficiency, improved throughput and higher patient satisfaction.

We have a team dedicated to assist medical facilities with their nitrous oxide programs. Let us know how we can be a resource and help you get started!

BENEFITS OF NITROUS OXIDE AND OXYGEN PROGRAMS

Rapid onset and short-acting

Nitrous oxide takes effect quickly and is out of the patient's system within a few minutes. It allows you to:

- Complete procedures more efficiently
- Reduce recovery time and staffing for patient monitoring
- Improve throughput
- Get patients back to normal activity faster

Improved patient care

Nitrous oxide offers ways to:

- Relax and provide comfort for your patients
- Improves patient satisfaction scores
- Pain Management/Anxiolysis

Cost-effective

Nitrous oxide delivery systems are portable, affordable and offer medical practices and hospitals a great deal of flexibility. N₂O gas is:

- Ideal for a variety of short procedures
- Easy for a physician or nurse to administer
- Two delivery options – continuous flow and demand flow



**TITRATEABLE AND EASILY
REVERSIBLE WITH 100% OXYGEN
ANALGESIC AND AMNESTIC
PROPERTIES**

**EASE OF ADMINISTRATION
EQUIPMENT IS COST EFFECTIVE
& PORTABLE**

Common Procedures Completed With Nitrous Oxide and Oxygen

Ideal for short, minimally invasive procedures where there is a need for pain management or minimal sedation.

- | | | |
|----------------------|-------------------------------|--------------------|
| • IV Starts | • Joint Dislocation Treatment | • PICC Placement |
| • Venipuncture | • CT Scans | • Dye Injections |
| • Fracture Reduction | • Catheter Insertion | • Joint Injections |
| • Laceration Repair | • Radiologic Procedures | • Biopsies |
| • Wound Care | | • Lumbar Punctures |

www.PorterInstrument.com/Medical

Demand Flow And Continuous Flow Systems

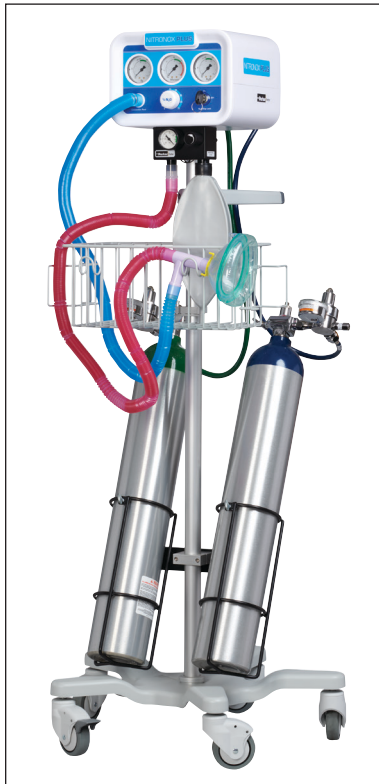
Porter is the only company that manufactures both demand flow and continuous flow delivery systems.

Different applications call for different delivery options. Porter has the complete solution for safe and predictable administration of nitrous oxide and oxygen. Nitronox Plus is a demand flow system offering an adjustable 0-70% nitrous oxide model that can be used with adult and pediatric patients.

Porter continuous flow devices allow the user to adjust the flow rate as well as the percentage mixture. This is ideal for younger patients or procedures where a continual or low flow is desired. Continuous flow devices can be used with a full face mask or nasal hood breathing circuit. Nasal hoods are ideal when procedures are in or around the mouth area.

Ask your Porter representative which system is best suited for your needs.

Demand Flow



Porter Nitronox Plus

Continuous Flow



Porter Midas™ Digital Touchscreen



Sentry Sedate
Available in analog or digital

Scavenging



Scavenger Plus



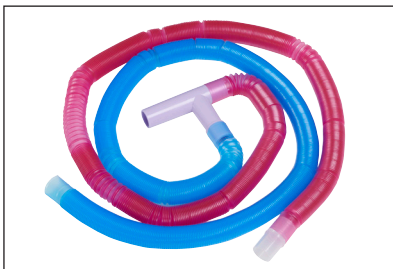
Scavenging Systems

All Porter systems have scavenging capabilities for safe and efficient removal of exhaled waste gas. Scavenger Plus is an FDA-cleared device that interfaces with vacuum and WAGD outlets to safely and effectively scavenge exhaled waste gas from the patient. Quiet and easy to use, simply adjust the knob and utilize the gauge to accurately control the vacuum flow rate. The exhalation bag allows for a visual confirmation that the vacuum flow rate is set correctly.

Breathing Circuits And Nasal Hoods



Silhouette Low Profile Nasal Mask



Breathing Circuit



Breathing Circuit Mask



Breathing Circuit Mouthpiece

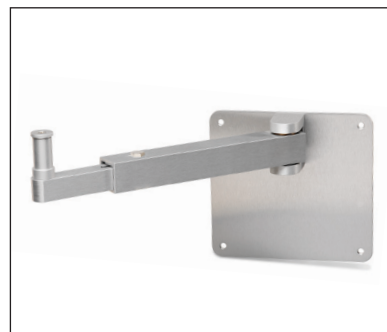
Porter offers a variety of gas delivery methods utilizing single-use, disposable options. For Nitronox Plus, the Porter disposable breathing circuit and mask or mouthpiece can be used. For continuous flow systems, Porter disposable breathing circuits and Silhouette nasal hoods are both available options. All are designed for maximum patient comfort, reliability, scavenging efficiency and infection control.

Mounting Options



Mobile Cart can hold 2 cylinders* or connect to wall outlets without cylinder holder.

* Cylinders not included.



Wall Arm Mount

Custom mounting options available for Booms, Walls, Rails and more.

PORTER
The Trusted Name In Nitrous



www.PorterInstrument.com/Medical

| 215-723-4000

| porternitrous@parker.com